

Sorbet Garden

A Free Pattern Sheet Featuring
Fabrics and Quilt Designed by
Jill Finley



Finished Quilt Size: 66" x 99"

49 West 37th Street, New York, NY 10018
tel: 212-686-5194 fax: 212-532-3525
Toll Free: 800-294-9495
www.henryglassfabrics.com


Jilly
Studio
NEEDLE ARTS

 Henry Glass & Co., Inc

facebook

Sorbet Garden

Finished Quilt Size: 66" x 99"
Fabrics in the Collection



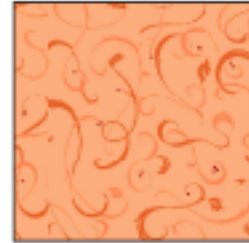
5716-9
White Medallions



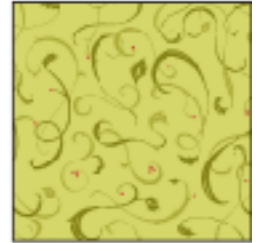
5716-22
Pink Medallions



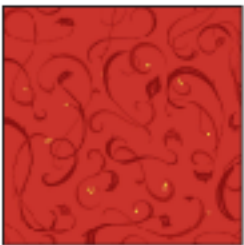
5716-66
Green Medallions



5717-33
Peach Swirl



5717-66
Green Swirl



5717-88
Red Swirl



5718-22
Pink Floral



5718-44
Yellow Floral



5718-66
Green Floral



5719-8
White Bud Print



5719-22
Pink Bud Print



5719-44
Yellow Bud Print



5720-33
Peach Leaves



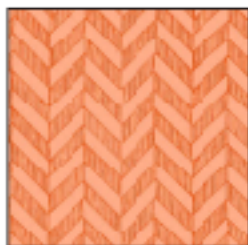
5720-44
Yellow Leaves



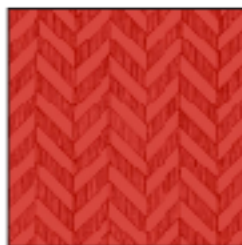
5720-66
Green Leaves



5721-9
White Herringbone



5721-33
Peach Herringbone



5721-88
Red Herringbone



5722-9
White Tonal



5722-66
Green Tonal



5722-88
Red Tonal

Materials

5721-9 White Herringbone 2 yards
 5716-66 Green Medallions 2 yards
 5722-66 Green Tonal 1 5/8 yards
 (includes binding)

5716-22, 5717-33, 5717-66,
 5717-88, 5718-22, 5718-44,
 5718-66, 5719-22, 5719-44,
 5720-33, 5720-44, 5720-66,
 5721-33, 5721-88, 5722-88

1/4 yard EACH
 (fat quarters
 or regular cuts)

5716-9 White Medallions 6 1/8 yards
 (for quilt backing)

Template plastic

Thread to match green tonal fabric

All supplies for your preferred method
 of appliqué.

Cutting Instructions

Please note: all strips are cut across the width of
 the fabric from selvage edge to selvage edge.

From the white herringbone, cut:

(14) 4 1/2" strips. Recut (9) strips into (80) 4 1/2"
 x 4 1/2" squares. Recut (5) strips into (80)
 2 1/2" x 4 1/2" pieces.

From the green medallions, cut:

(8) 7 1/2" strips for the outer border.

From the green tonal, cut:

(9) 2 1/4" strips for the binding.

(7) 1 1/2" strips for the inner border.

Reserve remaining fabric for appliqués.

If Using Fat Quarters:

From EACH of the (15) assorted peach,
 yellow, red, green and pink fabrics, cut:

(3) 4 1/2" strips. Recut into (24) 2 1/2" x 4 1/2"
 pieces.

OR

If Using Regular Quarter Yard Cuts:

From EACH of the (15) assorted peach,
 yellow, red, green and pink fabrics, cut:

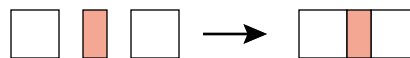
(2) 2 1/2" strips. Recut into (18) 2 1/2" x 4 1/2"
 pieces.

Sewing Instructions

All seams are sewn using 1/4" seam allowance with
 pieces held right sides together and raw edges even.

1. Arrange (13) 2 1/2" x 4 1/2" assorted peach pieces,
 (4) 2 1/2" x 4 1/2" white herringbone pieces, and (4)
 4 1/2" x 4 1/2" white herringbone squares into (5) rows
 as shown in the diagram below in step 5. Use the
 quilt pictured on the cover as a guide to peach fabric
 placement or use any arrangement you find
 pleasing.

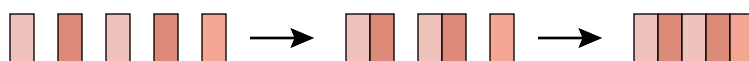
2. Stitch 4 1/2" white herringbone squares to each
 long side of a 2 1/2" x 4 1/2" peach piece to make
 Row 1. Repeat to make a second unit for block
 Row 5.



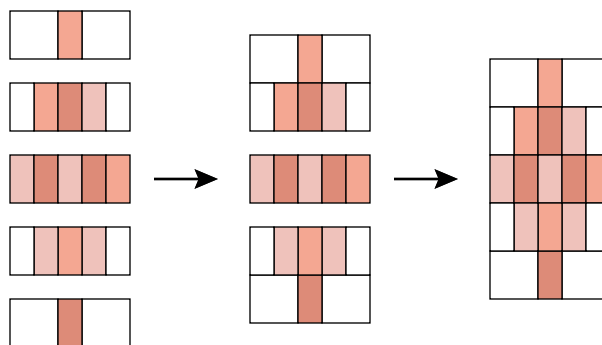
3. Sew together (3) 2 1/2" x 4 1/2" peach pieces side
 by side. Stitch 2 1/2" x 4 1/2" white herringbone
 pieces to each end to complete Row 2. Repeat to
 make a second unit for block Row 4.



4. Stitch together (5) 2 1/2" x 4 1/2" peach pieces
 side by side to make block Row 3.



5. Assemble block Rows 1-5 as shown below to
 complete (1) peach block.



6. Repeat steps 1-5 to make a total of (4) blocks
 in each of five colors: peach, yellow, red, green,
 and pink.

Quilt Assembly

1. Arrange the (20) blocks into (4) rows with (5) blocks in each row. Use the quilt pictured on the cover as a guide to individual block placement or use any arrangement you find pleasing.
2. Stitch the blocks into rows and sew the rows together to complete the quilt center.
3. Trim the selvages from the 1 ½" green tonal strips. Stitch the strips together end to end to make a long 1 ½" strip. Cut this long strip into (2) 80 ½" and (2) 52 ½" lengths (*if your measurements are different, cut to fit your quilt top*). Sew the longer pieces to the left and right sides of the quilt center. Sew the shorter pieces to the top and bottom.
4. Trim the selvages from the 7 ½" green medallions strips. Stitch the strips together end to end to make a long 7 ½" strip. Cut this long strip into (2) 82 ½" and (2) 66 ½" lengths (*if your measurements are different, cut to fit your quilt top*). Sew the longer pieces to the left and right sides of the quilt top. Sew the shorter pieces to the top and bottom.

Appliqué

1. Using the full size paper patterns on this page and template plastic, make templates for the swirl and tear drop shapes. Please note that the paper patterns are not reversed and do not include seam allowances.
2. Prepare (48) swirl and (24) tear drop shapes as necessary for your preferred method of appliqué.
3. Using the line drawing to the right as a guide for placement, arrange (4) prepared swirl and (2) prepared tear drop shapes at the intersection of (4) blocks. Appliqué the shapes to the quilt top. Repeat to appliqué a total of (12) motif sets to the quilt top.

Finishing

1. Layer the quilt top with batting and backing and quilt as desired.
2. Trim the batting and backing even with the outer edge of the quilt top. Bind the finished quilt using the 2 ¼" green tonal strips.

